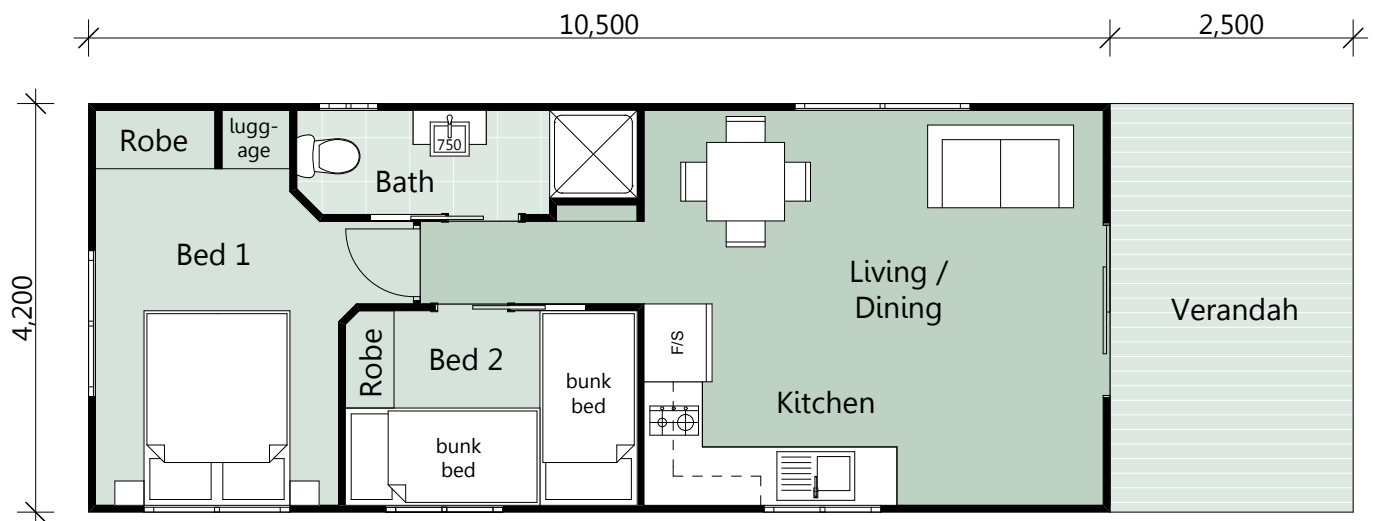


Ponderosa

Area

Living:	44.10 sqm
Verandah:	10.50 sqm
Total:	54.60 sqm



EASTCOAST HOMES & PARK CABINS

32 Wheeler Crescent Currumbin Waters
QLD 4223

P: 07 5598 1558

F: 07 5525 6475

E: info@eastcoasthomes.com.au

Disclaimer

Photographs & illustrations are intended to be a visual aid only. Eastcoast Homes & Park Cabins gives no warranty and makes no representation to the accuracy or sufficiency of any description, illustrations, photographs or statements contained in this brochure and accepts no liability for any loss suffered by any person who relies wholly or partly upon the information presented. All information is subject to change without notice © Copyright 2012

Plot Date: 19/11/2012 Drawn By: MB